

Wall mirror

# BELA

BY Hugo Silva & Joana Santos

REF. 93A *small (straw)*

REF. 93B *small (cork)*

REF. 94A *big (straw)*

REF. 94B *big (cork)*



## Materials

Solid ash (structure and fixed wall peg), mirror glass sheet and hand-sewn straw braid or cork fabric (strap).

## Finishings

Structure and fixed wall peg with colorless matt varnish.

## Custom

Arranged with the client.

## Description

BELA leads to a fantasy world where one can imagine their dream character. This wall mirror is suspended by a cork fabric strap. Its simple circular shape is decorative but also functional, and can become a face mirror.

Wall mirror

# BELA

BY Hugo Silva & Joana Santos

REF. 93A *small (straw)*

REF. 93B *small (cork)*

REF. 94A *big (straw)*

REF. 94B *big (cork)*



Wall mirror

# BELA

BY Hugo Silva & Joana Santos

REF. 93A *small (straw)*

REF. 93B *small (cork)*

REF. 94A *big (straw)*

REF. 94B *big (cork)*



## DIMENSIONS

### BELA big

REF. 94

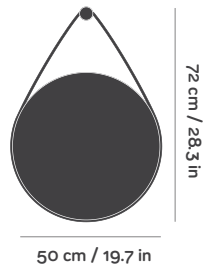
#### Packaging

W54 x D54 x H10 cm

W21.3 x D21.3 x H3.9 in

Gross Weight 4.1 kg / 9 lbs

Units per pack 1 pc



### BELA small

REF. 93

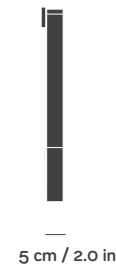
#### Packaging

W36 x D23 x H8 cm

W14.2 x D9.1 x H3.1 in

Gross Weight 0.8 kg / 1.8 lbs

Units per pack 1 pc



## MATERIALS

---

### OAK VENEER

High quality oak veneer glued to the MDF and finished with colourless matt varnish that protects the natural beauty of the wood. The varnish has a special uv protection that prevents discoloration, and also forms a water repellent layer. MDF is stronger and more stable than solid wood, so the chances of splitting or cracking are reduced.



Colourless

### RICE STRAW

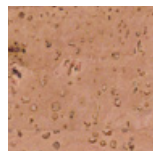
100% rice straw, made with natural braided fiber. Hand-sewn straw braid. Lightness and resistance are its characteristics.



Natural

### CORK FABRIC

Resistant to abrasion, scratches, stains and dirt. With mechanical resistance. Waterproof, anti-bacterial and hygienic. Durable finishing. Softness to touch. No heavy metals or their compounds, organic solvents, mineral fibres or formaldehyde are used.



Natural

## NOTES

Other finishing options are possible, on a case-by-case basis.  
Samples of finishings are only representative and not an exact match of colour and tonality.