

Chair  
**GAGO**

BY Hugo Silva & Joana Santos

---

*This chair is for adventurers!  
Eager for discovery, driven  
by the passion in History.*





#### Materials

Structure in solid ash, oak or walnut. Upholstery in 'Step' fabric or 'Chili' fabric or 'Luna 2' + 'Obika Leather' fabrics or 'Burel' + 'Cork' fabrics.

#### Finishings

Wood finished with colourless matt varnish.



#### Custom

Arranged with the client.

#### Description

The GAGO chair honours the first aerial crossing of the South Atlantic realized by Sacadura Cabral and Gago Coutinho in 1922. Inspired by the shape of the aviator's helmet and with curved arms like the wings of a seaplane, the GAGO's upholstery rests on a platform of turned wood inspired in the hydroplane floaters, giving the users the impression of taking off on an adventure. On its back there is the inscription "1922, 8383 kms", recalling this historical event of the aeronautics. GAGO travels through spaces of familiar conviviality or metropolitan agitation, making each place unforgettable.



Chair  
**GAGO**  
BY Hugo Silva & Joana Santos

REF. 31 *sacadura*  
REF. 32 *sacadura metal*  
REF. 33 *gago*



Chair

# GAGO

BY Hugo Silva & Joana Santos

REF. 31 *sacadura*

REF. 32 *sacadura metal*

REF. 33 *gago*



## DIMENSIONS

### GAGO

REF. 33

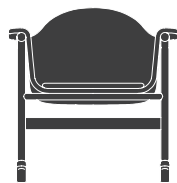
#### Packaging

W75 x D75 x H78 cm

W29.5 x D29.5 x H30.7 in

Gross Weight 8.8 kg / 19.4 lbs

Units per pack 1 pc

. Other packaging  
measures available

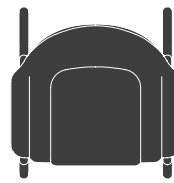
69 cm / 27.2 in

40 cm / 15.7 in

71 cm / 28.0 in



70 cm / 27.6 in



### SACADURA

REF. 31

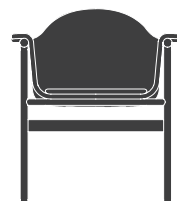
#### Packaging

W75 x D75 x H85 cm

W29.5 x D29.5 x H33.5 in

Gross Weight 8.9 kg / 19.6 lbs

Units per pack 1 pc

. Other packaging  
measures available

69 cm / 27.2 in

46 cm / 18.1 in

79 cm / 31.1 in



57 cm / 22.4 in



### SACADURA *Metal*

REF. 32

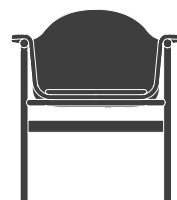
#### Packaging

W75 x D75 x H85 cm

W29.5 x D29.5 x H33.5 in

Gross Weight 10.4 kg / 22.9 lbs

Units per pack 1 pc

. Other packaging  
measures available

69 cm / 27.2 in

46 cm / 18.1 in

79 cm / 31.1 in



57 cm / 22.4 in

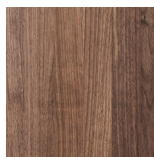




## MATERIALS

### SOLID WALNUT

American solid walnut, that comes from forests controlled through a process covered by the FSC Certification. This wood can last a lifetime but it needs maintenance and care. It is finished with colourless matt varnish.



**BWA**  
Colourless

### SOLID OAK

American solid oak, that comes from forests controlled through a process covered by the FSC Certification. This wood can last a lifetime but it needs maintenance and care. It is finished with colourless matt varnish.



**BOA**  
Colourless

### SOLID ASH

European solid ash wood from FSC-certified forests. It lasts a lifetime with regular maintenance. It is finished with a colorless or colored matte varnish that offers UV protection for discoloration prevention and water repellency.



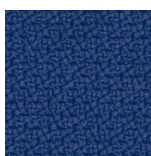
**ASH**  
Colourless

### STEP

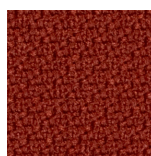
100% Trevira cs. 100.000 Martindale. Wash or dry cleaning. It is resistant and has fire-resistant properties. It carries the Oeko-Tex health label and the EU environmental Ecolabel.



**AV18**  
Quiet Green



**AV15**  
Deep Blue



**AV16**  
Luxury Red



**AV12**  
Serene Beije

### CHILI

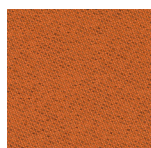
75% post-consumer recycled polyester fr / 25% polyester fr (fr inside the fiber), 60.000 rubs martindale (EN ISO 12947-2); 100.000 double rubs wyzenbeek (ASTM D4157-07). Wash or dry cleaning P(W).



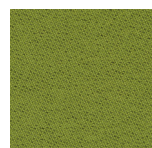
**DV12**  
Serene Beije



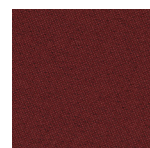
**DV10**  
Dry Yellow



**DV7**  
Fond Orange



**DV18**  
Quiet Green

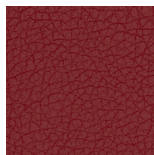


**DV16**  
Luxury Red

## MATERIALS

### OBICA LEATHER *by Gabriel*

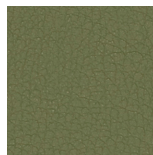
66% polyurethan, 24% polyester and 10% cotton. 100.000 Martindale. Dry cleaning. It has fire-resistant properties. It carries the Oeko-Tex health label and the EU environmental Ecolabel.



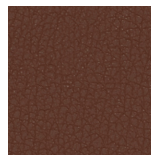
**BV16**  
Luxury Red



**BV15**  
Deep Blue



**BV6**  
Sleepy Green



**BV23**  
Luxury Brown

### LUNA 2 *by Gabriel*

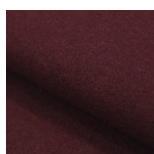
90% wools of New Zealand and 10% polyamide. 70,000 rubs martindale (EN ISO 12947-2) . Dry cleaning P(S).



**BV12**  
Serene Beige

### BUREL

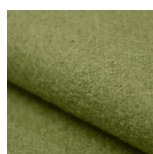
Burel is a high-quality rustic fabric made from pure wool of Serra da Estrela sheep, such as the Bordaleira, Churra, and Merina breeds. It doesn't give off fluff. It is durable, thermal, and resistant to wear and color fading.



**EV16**  
Luxury Red



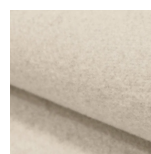
**EV15**  
Deep Blue



**EV6**  
Sleepy Green



**EV7**  
Fond orange



**EV12**  
Serene beige

### CORK FABRIC

Organic, waterproof, high-resistance, abrasion resistant, soft, durable, anti-bacterial, hygienic and easy to clean. This material maintains the natural beauty and durability of cork while being free from harmful substances.



**EV**  
Natural

## NOTES

Other finishing options are possible, on a case-by-case basis.  
Samples of finishings are only representative and not an exact match of colour and tonality.