

NEW Chair
**SACADURA
& GAGO**

BY Hugo Silva & Joana Santos

*This chair is for adventurers!
Eager for discovery, driven
by the passion in History.*



DAM

Office
+351 256 004 124
contact@damportugal.com

Press
+351 920 401 918
press@damportugal.com

www.damportugal.com
copyright © DAM Brand
Portugal, 2020

Smile with us :)



Chairs
SACADURA & GAGO

BY Hugo Silva & Joana Santos

REF. 31 *sacadura*
REF. 32 *sacadura metal*
REF. 33 *gago*



Materials

Solid ash, oak, walnut or metal and fabric by Gabriel.dk ('Step' or 'Luna 2' and 'Obika Leather +').

Finishings

Wood finished with colourless matt varnish.

Custom

Arranged with the client.

Description

The SACADURA & GAGO chairs honour the first aerial crossing of the South Atlantic realized by Sacadura Cabral and Gago Coutinho in 1922. Inspired by the shape of the aviator's helmet and with curved arms like the wings of a seaplane, the upholstery of SACADURA & GAGO rests on a platform of turned wooden beams, giving the users the impression of taking off on an adventure. On their back there is the inscription "1922, 8383 kms", recalling this historical event of the aeronautics. SACADURA & GAGO travel through spaces of familiar conviviality or metropolitan agitation, making each place unforgettable.



Chairs

SACADURA & GAGO

BY Hugo Silva & Joana Santos

REF. 31 *sacadura*
REF. 32 *sacadura metal*
REF. 33 *gago*



Chairs

SACADURA & GAGO

BY Hugo Silva & Joana Santos

REF. 31 *sacadura*
REF. 32 *sacadura metal*
REF. 33 *gago*



DIMENSIONS

SACADURA

REF. 31

Packaging

W75 x D75 x H85 cm

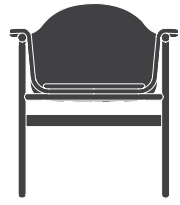
W29.5 x D29.5 x H33.9 in

Gross Weight 8.9 kg / 19.6 lbs

Units per pack 1 pc

. Other packaging

measures available



69 cm / 27.2 in

46 cm / 18.1 in
79 cm / 31.1 in



57 cm / 22.4 in



SACADURA *Metal*

REF. 32

Packaging

W75 x D75 x H85 cm

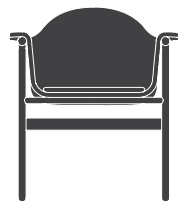
W29.5 x D29.5 x H33.9 in

Gross Weight 10.4 kg / 22.9 lbs

Units per pack 1 pc

. Other packaging

measures available



60 cm / 23.6 in

46 cm / 18.1 in
79 cm / 31.1 in



57 cm / 22.4 in



GAGO

REF. 33

Packaging

W75 x D75 x H78 cm

W29 x D29.5 x H30.7 in

Gross Weight 8.8 kg / 19.4 lbs

Units per pack 1 pc

. Other packaging

measures available

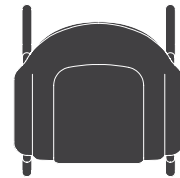


69 cm / 27.2 in

40 cm / 15.7 in
71 cm / 28 in



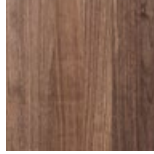
70 cm / 27.6 in



MATERIALS

SOLID WALNUT

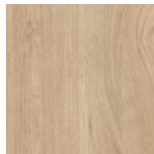
American solid walnut, that comes from forests controlled through a process covered by the FSC Certification. This wood can last a lifetime but it needs maintenance and care. It is finished with colourless matt varnish.



BWA
Colourless

SOLID OAK

American solid oak, that comes from forests controlled through a process covered by the FSC Certification. This wood can last a lifetime but it needs maintenance and care. It is finished with colourless matt varnish.



BOA
Colourless

SOLID ASH

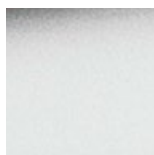
European solid ash, that comes from forests controlled through a process covered by the FSC Certification. This wood can last a lifetime but it needs maintenance and care. It is finished with colourless or coloured matt varnish with a special uv protection that prevents discoloration, and also forms a water repellent layer.



ASH
Colourless

METAL

Hardness and strength are the characteristics of the metal. It is painted with a powder coating that is scratch and wear resistant.

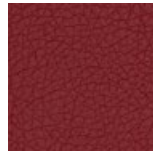


AV20
Warm White

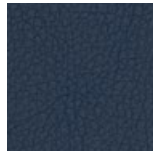
MATERIALS

OBIKA LEATHER *by Gabriel*

66% polyurethan, 24% polyester and 10% cotton. 100.000 Martindale. Dry cleaning. It has fire-resistant properties. It carries the Oeko-Tex health label and the EU environmental Ecolabel.



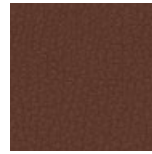
DV16
Luxury Red



DV15
Deep Blue



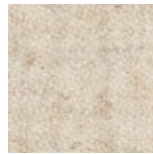
DV6
Sleepy Green



DV23
Luxury Brown

LUNA 2 *by Gabriel*

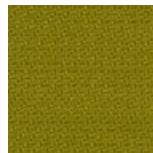
90% wools of New Zealand and 10% polyamide. 70,000 rubs martindale (EN ISO 12947-2) . Dry cleaning P(S).



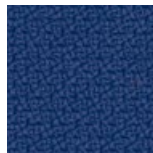
DV12
Serene Beige

STEP

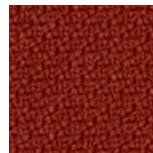
100% Trevira cs. 100.000 Martindale. Wash or dry cleaning. It is resistant and has fire-resistant properties. It carries the Oeko-Tex health label and the EU environmental Ecolabel.



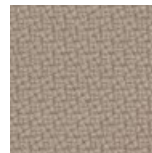
AV18
Quiet Green



AV15
Deep Blue



AV16
Luxury Red



AV12
Serene Beige

NOTES

Other finishing options are possible, on a case-by-case basis.
Samples of finishings are only representative and not an exact match of colour and tonality.