

Sofa
VALENTIM

BY Hugo Silva & Joana Santos

REF. 23



Materials

Solid oak or solid walnut (structure) and 'Step' or 'Obika Leather' fabrics by Gabriel. It is also possible to consider and analyze a client's own material to the upholstery (with 8 mts based on fabric with 1,4 mts).

Finishings

Colourless matt varnish (structure).



Custom

Arranged with the client.

Description

VALENTIM is a sofa that refers to the nostalgia of the serenades dedicated to a maiden at the balcony. Its light and turned structure in solid wood and the delicate curves of the upholstery express the ideal serenity that makes any environment unforgettable.

DIMENSIONS

VALENTIM

REF. 23

Packaging

W88 x D202 x H85 cm

W34.6 x D79.5 x H33.5 in

Gross Weight 51 kg / 112.4 lbs

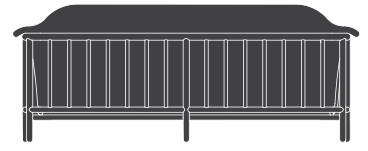
Units per pack 1 pc



196 cm / 77.2 in



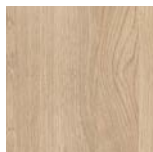
82 cm / 32.3 in



MATERIALS

SOLID OAK

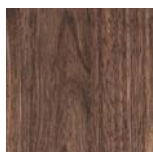
American solid oak, that comes from forests controlled through a process covered by the FSC. It can last a lifetime but it needs maintenance. It is finished with colourless matt varnish.



OA
Colourless

SOLID WALNUT

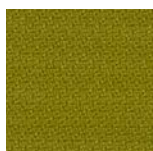
American solid walnut, that comes from forests controlled through a process covered by the FSC. It can last a lifetime but it needs maintenance. It is finished with colourless matt varnish.



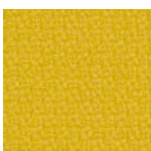
WA
Colourless

STEP

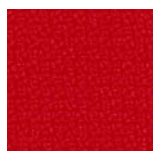
100% Trevira cs. 100.000 Martindale. Wash or dry cleaning. It is resistant and has fire-resistant properties. It carries the Oeko-Tex health label and the EU environmental Ecolabel. More colours available under request.



AV18
Quiet Green



AV10
Dry Yellow



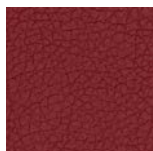
AV11
Hot Red



AV12
Serene Beige

OBIKA LEATHER

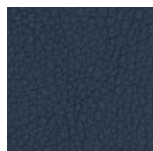
66% polyurethan, 24% polyester and 10% cotton. 100.000 Martindale. Dry cleaning. It has fire-resistant properties. It carries the Oeko-Tex health label and the EU environmental Ecolabel. More colours available under request.



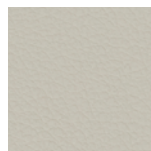
DV16
Luxury Red



DV13
Baby Blue



DV15
Deep Blue



DV17
Light Grey

NOTES

Other finishing options are possible, on a case-by-case basis. Samples of finishings are only representative and not an exact match of colour and tonality.
